

# The Chesapeake



*Elevation A*  
*Shown With Some Optional Features*



*Elevation B*  
*Shown With Some Optional Features*



*Elevation C*  
*Shown With Some Optional Features*

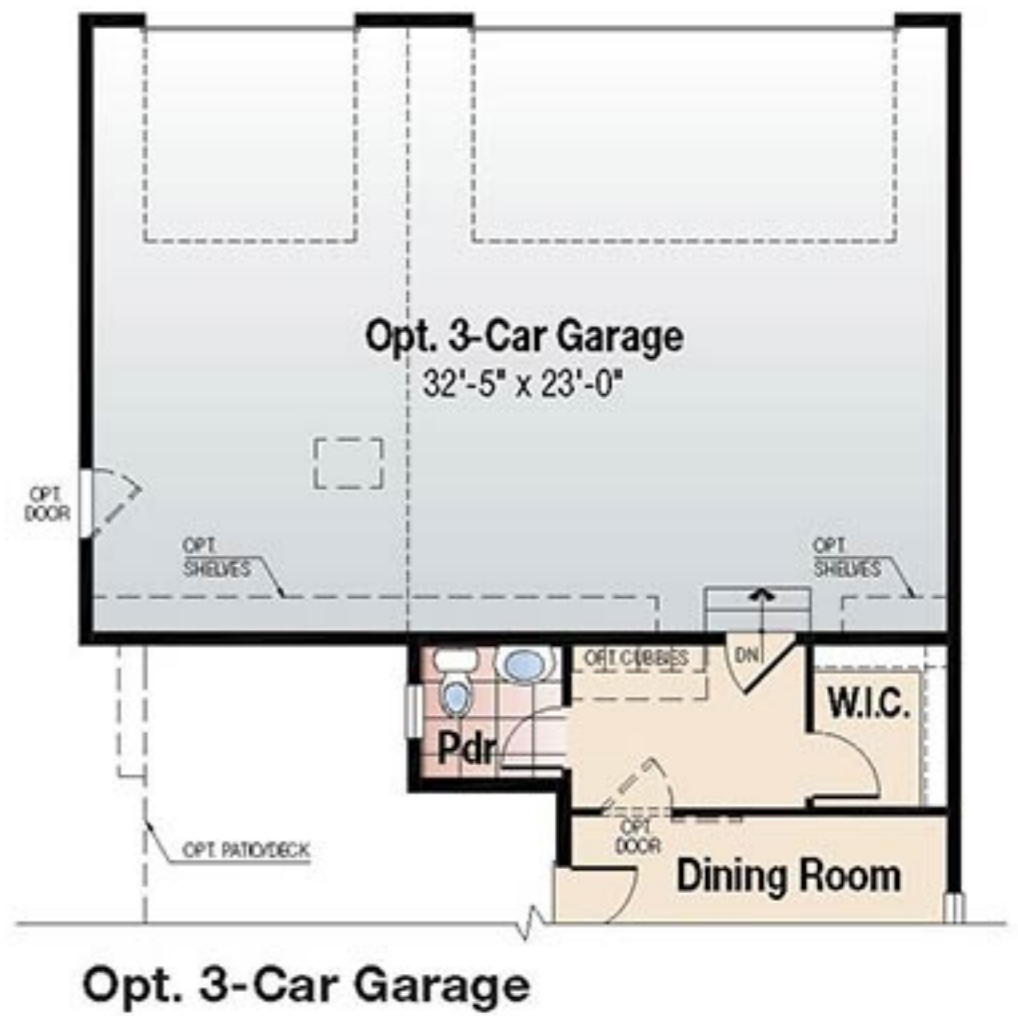
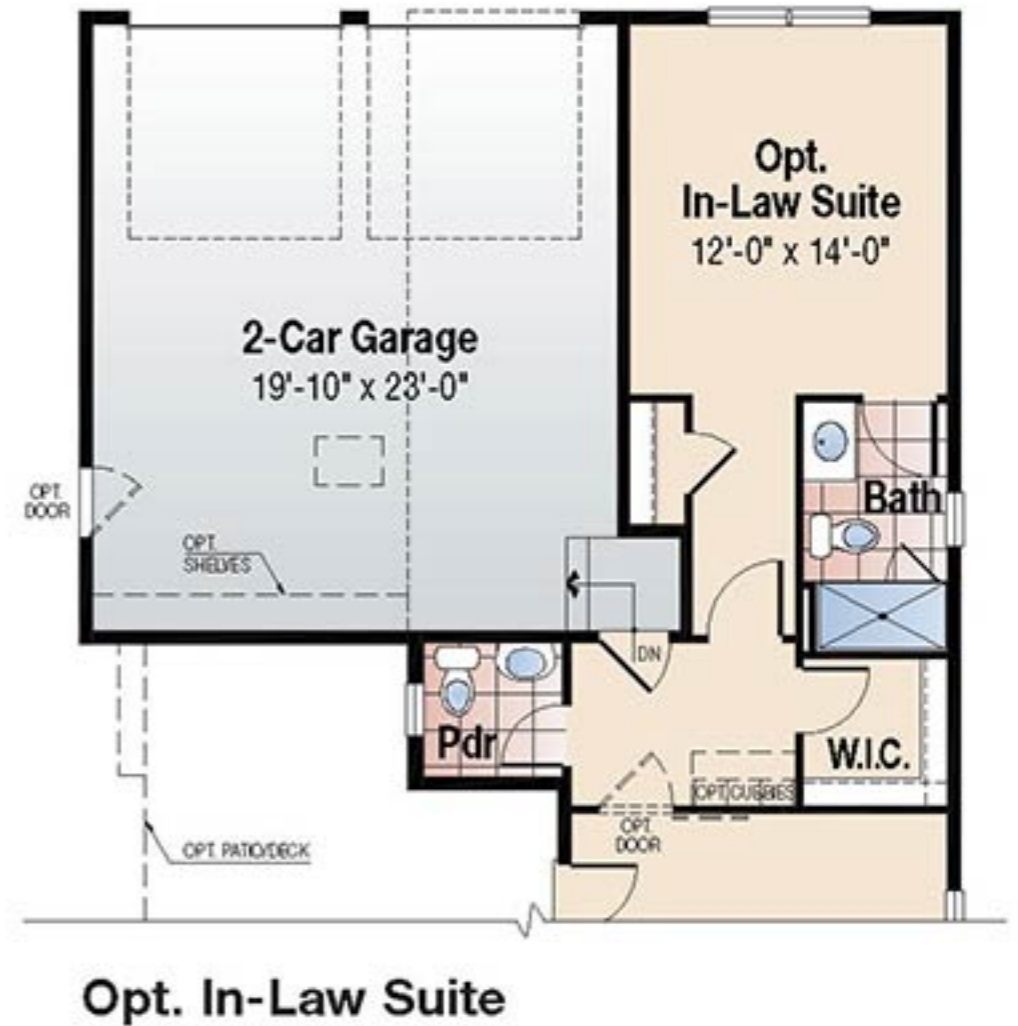
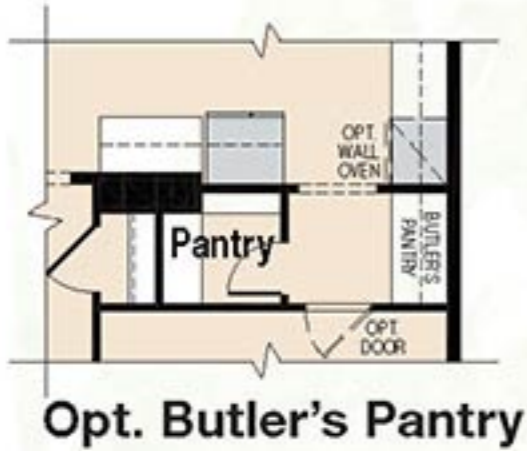


**Mitchell & Best**

The Name of Quality for Over 40 Years

*Artist's rendering for illustrative purposes only. Shown with some optional features. See Sales Manager for details.*

# The Chesapeake

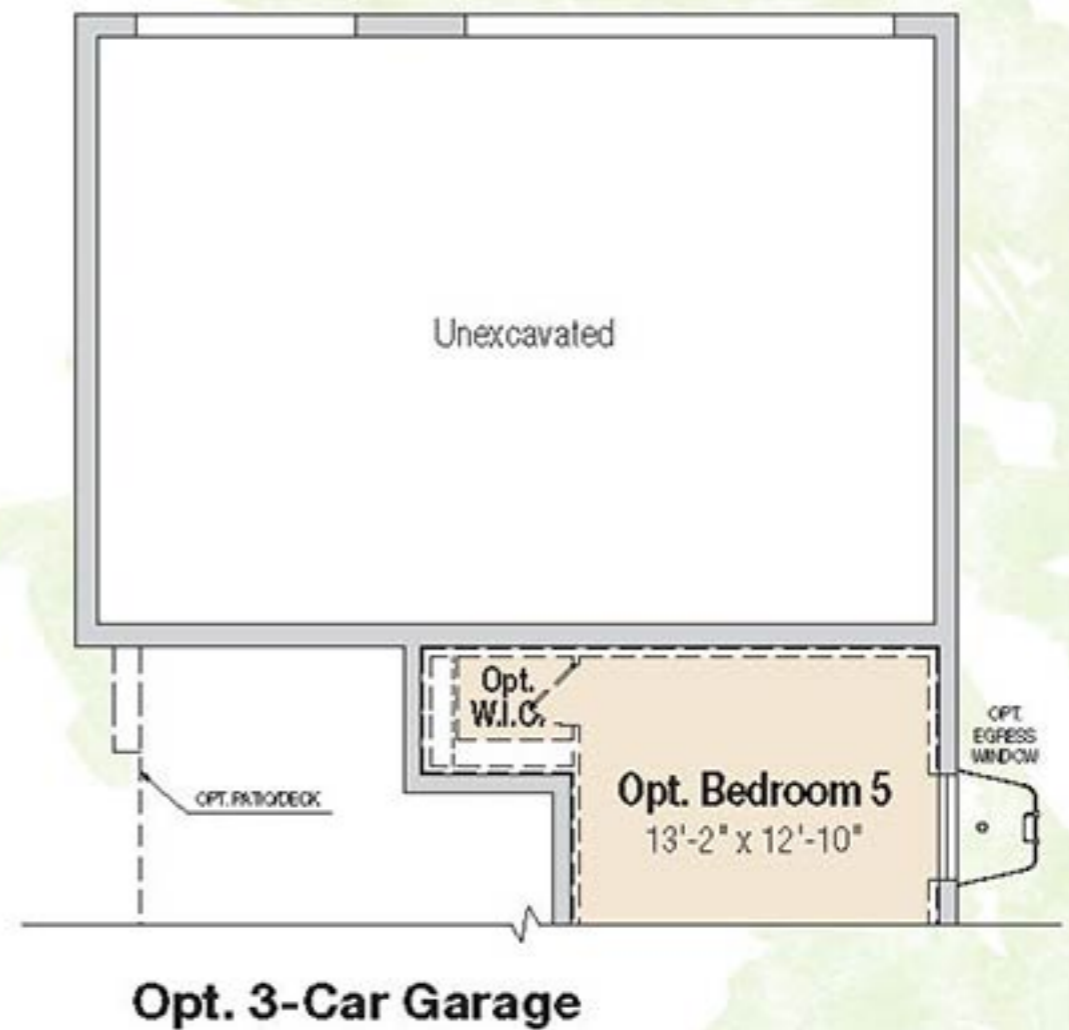
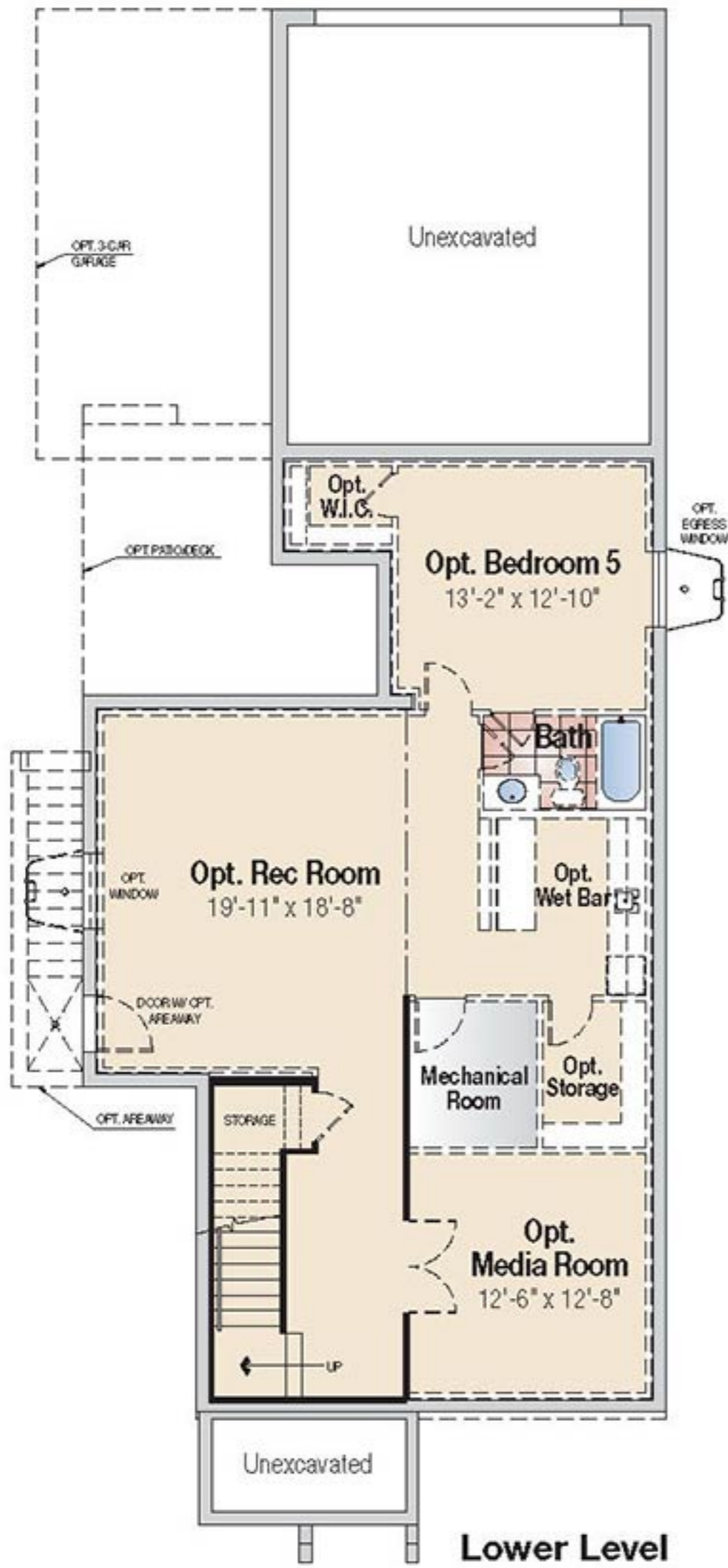


**Mitchell & Best**

The Name of Quality for Over 40 Years



All dimensions are approximate and accuracy cannot be guaranteed. Plan dimensions, elevations and features are subject to change without notice or obligation. These inserts are for illustrative purposes only. Certain options, as shown, may not be available on all elevations and on every homesite. See Sales Manager for details.



**Mitchell & Best**

The Name of Quality for Over 40 Years

"We are pledged to the letter and spirit of U.S. policy for the achievement of equal housing opportunity throughout the Nation. We encourage and support an affirmative advertising and marketing program in which there are no barriers to obtaining housing because of race, color, religion, sex, handicap, familial status, or national origin."

MHBR# 7247

060619